

Thank you for purchasing AROMA AG-40A, please read this manual carefully before your operation.



©2018 Aroma Music Co., Ltd.

**Precautions**

**Location**

Using the unit in the following locations can result in a malfunction.

- In direct sunlight
- Locations of extreme temperature or humidity
- Excessively dusty or dirty locations
- Locations of excessive vibration
- Close to magnetic fields

**Power supply**

Be sure to turn the power OFF when the unit is not in use.

If using a power adapter, please connect the designated AC adapter to an AC outlet of the correct voltage. Do not connect it to an AC outlet of voltage other than that for which your unit is intended.

**Interference with other electrical devices**

Radios and televisions placed nearby may experience reception interference.

Operate this unit at a suitable distance from radios and televisions.

**Handling**

To avoid breakage, do not apply excessive force to the switches or controls.

**Care**

If the exterior becomes dirty, wipe it with a clean, dry cloth. Do not use liquid cleaners such as benzene or thinner, or cleaning compounds of flammable polishes.

**Keeping foreign matter out of your equipment**

Never set any container with liquid in it near this equipment. If liquid gets into the equipment, it could cause a breakdown, fire, or electrical shock. Be careful not to let metal objects get into the equipment.

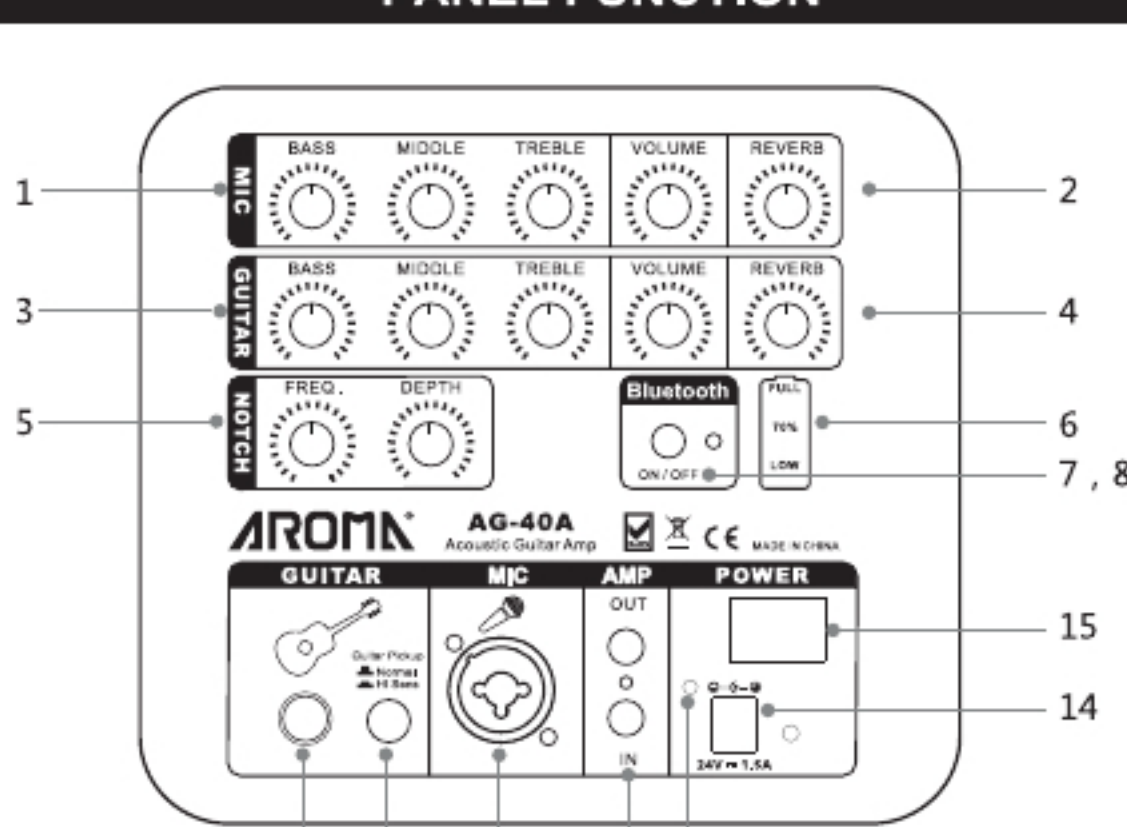
**Keep this manual**

After reading this manual, please keep it for later reference.

**FEATURES**

- 8 inch full frequency speaker ( including treble cup ), peak power 40W.
- Guitar channel and Mic channel function independently.
- 3 bands equalizer, reverb controls for both guitar and mic channels.
- Anti notch function even using the amp within a short distance.
- High efficient compressor inside to protect speaker and prevent distortion.
- Bluetooth inside for convenient connection with your smart phones or other devices with bluetooth function.
- Big power capacity rechargeable Li battery inside for convenient use any where.
- Metal handle, stand base and cloth bag included for easy carry and use outside.

**PANEL FUNCTION**



- 1. ....Mic 3 bands equalizer
- 2. ....Mic chorus control
- 3. ....Guitar 3 bands equalizer
- 4. ....Guitar chorus control
- 5. .... Notch filter control
- 6. ....3 power levels indicator ( red color, indication details at Diagram One )
- 7. ....Bluetooth switch ( Bluetooth preset Off when amp power On )
- 8. ....Bluetooth use indicator ( blue color, indication details at Diagram One )
- 9. ....Guitar In ( 6.35mm gauge )
- 10. ....Guitar pickup style select
- 11. ....2 in 1 jack ( XLR and 6.35mm gauge ), Mic in
- 12. ....AMP in and out
- 13. ....Wall power indicator and power recharging indicator ( red color and green color, details at Diagram Two )
- 14. ....Power adapter jack 24V  $\bar{\text{---}}$  1.5A (  $\ominus$ — $\oplus$  )
- 15. ....Power switch

Diagram One:

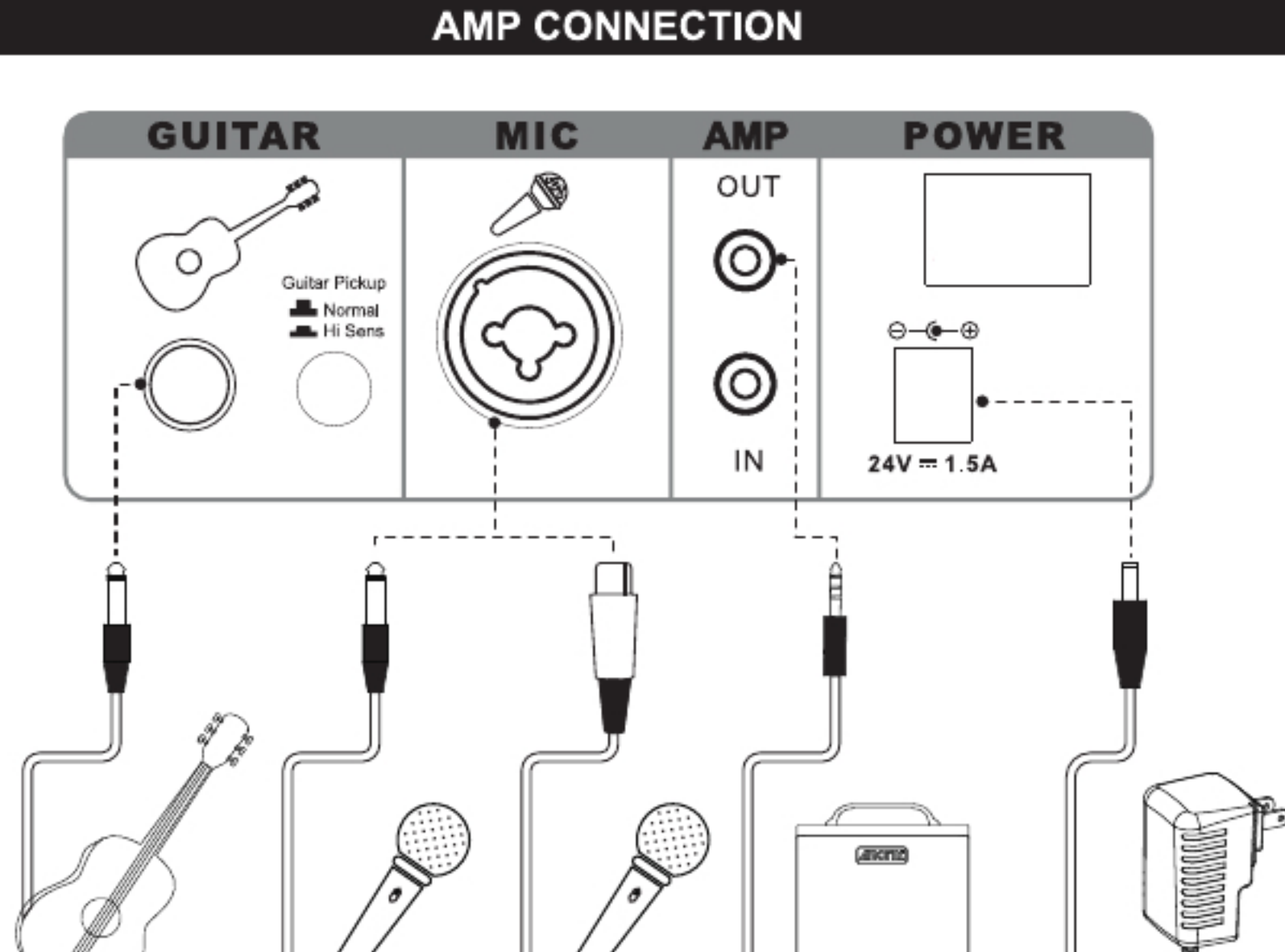
Condition	3 power levels indicator ( red )	Bluetooth indicator ( blue )
Power On	Different indicators lighting up relevant to power levels	Light Off
Bluetooth On		Press and hold to turn On bluetooth ( Bluetooth is preset Off when amp power On )
Bluetooth Play		Blue indicator flashes fast
Bluetooth Pause		Blue indicator flashes slow
		Blue indicator light solid

Diagram Two:

Connect adapter	Red green indicator
Recharging	Red indicator On
Full recharged	Green indicator On

Remind: Amp is able to be used during power recharging. Recharging is possible no matter power switch On or Off.

**AMP CONNECTION**



**HOW TO USE**

1. When using the amp, turn all the panel knobs to the middle position firstly, and then turn the volume up and turn the reverb knob accordingly. Adjust the tones to your like.

※ Remind: Please make sure the type of guitar pickup is Positive or Passive, and then use the knob ( #10 ) to select.

2. Follow the same direction as above when using a mic.
3. AMP OUT is only for connecting with another amp AMP IN. Another connected amp is controlled by the main amp, all the tone, volume level and effects stay the same.

※ Remind: Use Bluetooth to play music from another Bluetooth machine only.

4. Connect Bluetooth, press and hold button #7. The blue indicator On, which means the bluetooth turned On. The amp name is " AG-40A ".  
IOS system phone needs to input code "0000".  
Android system phone needs no code.  
A beep sound "Di...." will be generated when bluetooth connection succeed.

Remind: 1. The bluetooth volume level is preset according to Android system. Please turn the volume down accordingly if you use a IOS system phone.

2. If you need to change the bluetooth connection of the amp to another phone, please disconnect the previous connection.

**SPECIFICATIONS**

<p><b>Mic Channel</b></p> <p>Input jack: 2 in 1 ( XLR and 6.35mm gauge )</p> <p>Input impedance: 1K ohm</p> <p>EQ bands: bass, middle, treble</p> <p>Volume control: independent</p> <p>Chorus effect: available</p> <p>Power peak: 40W</p> <p>Speaker: 8 inch, full range, including treble cup, 50W</p> <p>Bluetooth edition: 4.1</p> <p>Power jack: 24V <math>\bar{\text{---}}</math> /1.5A ( <math>\ominus</math>—<math>\oplus</math> )</p> <p>Dimension: 250×250×250mm</p>	<p><b>Guitar Channel</b></p> <p>Input jack: 6.35mm gauge</p> <p>EQ bands: bass, middle, treble</p> <p>Volume control: independent</p> <p>Chorus effect: available</p> <p>Net weight: 7 Kg</p> <p>Gross weight: 8.8 Kg</p> <p>Li battery: 18V/2200mAH</p> <p>Use duration: 5H(80% volume level)</p> <p>Recharging length: &lt;3H</p>
---	---

**PACKAGE ENCLOSURE**

- 1. AG-40A amp x 1
- 2. Power adapter x 1
- 3. AG-40A cloth bag x 1
- 4. 3.5mm gauge audio cable x 1
- 5. Operation manual x 1

**FCC Warning:**  
This equipment has been tested and found to comply with the limits for a Class B digital device, pursuant to part 15 of the FCC Rules. These limits are designed to provide reasonable protection against harmful interference in a residential installation. This equipment generates, uses and can radiate radio frequency energy and, if not installed and used in accordance with the instructions, may cause harmful interference to radio communications. However, there is no guarantee that interference will not occur in a particular installation. If this equipment does cause harmful interference to radio or television reception, which can be determined by turning the equipment off and on, the user is encouraged to try to correct the interference by one or more of the following measures:  
• Reorient or relocate the receiving antenna.  
• Increase the separation between the equipment and receiver.  
• Connect the equipment into an outlet on a circuit different from that to which the receiver is connected.  
• Consult the dealer or an experienced radio/TV technician for help.  
Caution: Any changes or modifications to this device not explicitly approved by manufacturer could void your authority to operate this equipment.  
This device complies with part 15 of the FCC Rules. Operation is subject to the following two conditions: (1) This device may not cause harmful interference, and (2) this device must accept any interference received, including interference that may cause undesired operation.  
The device has been evaluated to meet general RF exposure requirement. The device can be used in portable exposure condition without restriction.

